

DESCRIPTION

AMC MODEL SW-218-2A IS A REFLECTIVE BROAD BAND SPDT SWITCH MODULE WITH INTEGRAL TTL DRIVER, DESIGNED TO OPERATE AT +33 dBm CW SIGNAL.

SPECIFICATIONS

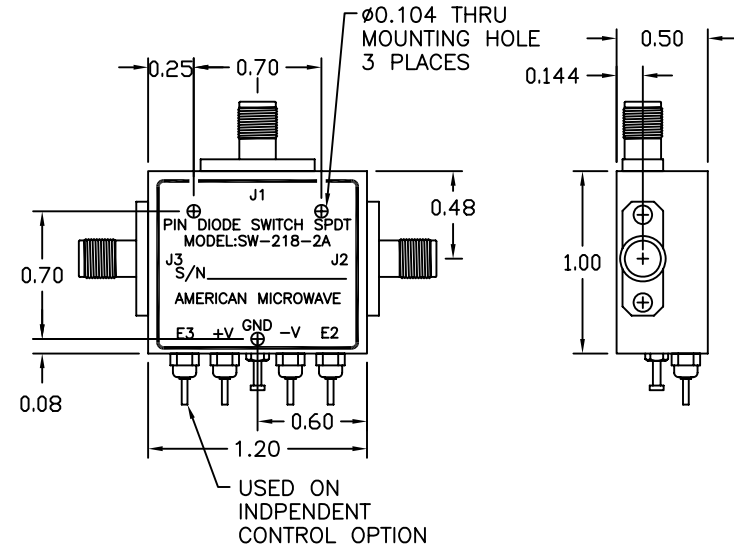
- FREQUENCY RANGE 0.3-18 GHz
- INSERTION LOSS 2.5 dB MINIMUM
- ISOLATION 0.3-4.0 GHz, 75 dB MINIMUM
4.0-18.0 GHz, 55 dB MINIMUM
- VSWR (ON) 2:1 MAXIMUM
- SWITCHING TIME
RISE (10% RF TO 90% RF) 50 ns MAXIMUM
FALL (90% RF TO 10% RF) 50 ns MAXIMUM
ON (50% TTL TO 90% RF) 100 ns MAXIMUM
OFF (50% TTL TO 10% RF) 100 ns MAXIMUM
- CONTROL TTL COMPATIBLE, UNITY LOAD
1 DEPENDANT CONTROL (TOGGLE)
LOGIC "0" J1-J2 PATH ON
LOGIC "1" J1-J3 PATH ON
- POWER SUPPLY +5VDC $\pm 5\%$ @ 65 mA MAXIMUM
-5VDC $\pm 5\%$ @ 50 mA MAXIMUM
- CONNECTORS
RF INPUT/OUTPUT SMA (FEMALE)
POWER SOLDER PIN (EMI)
CONTROL SOLDER PIN
- SIZE 1.20" x 1.0" x 0.50"

AVAILABLE OPTIONS

- A01 50 Ω CONTROL IMPEDANCE
- A02 100 Ω CONTROL IMPEDANCE
- A03 INVERSE CONTROL LOGIC (LOGIC "0", J1-J3 PATH ON)
- A04 2 INDEPENDENT CONTROLS (LOGIC "0" INSERTION LOSS)
- A05 INPUT/OUTPUT VIDEO FILTER (0.5 dB EXCESS LOSS)
- A14 J1 SMA MALE, J2 AND J3 SMA FEMALE
- A15 J1 SMA FEMALE, J2 AND J3 SMA MALE
- A17 ± 9 VDC TO ± 18 VDC SUPPLY

REVISIONS				
ZONE	REV.	DESCRIPTION	DATE	APPROVED
-	-	ORIGINAL RELEASE	8/20/07	

MECHANICAL OUTLINE



NOTES:

- 1) DIMENSIONS ARE IN INCHES
- 2) TOLERANCES: X.XX ± 0.020
X.XXX ± 0.010
- 3) WEIGHT: APPROX. 1.4 OZ

ENVIRONMENTAL RATINGS

- TEMPERATURE -55°C TO +95°C (OPERATING)
-65°C TO +125°C (STORAGE)
- HUMIDITY MIL-STD-202F, METHOD 103B COND. B
- SHOCK MIL-STD-202F, METHOD 213B COND. B
- VIBRATION MIL-STD-202F, METHOD 204D COND. B
- ALTITUDE MIL-STD-202F, METHOD 105C COND. B
- TEMPERATURE CYCLE MIL-STD-202F, METHOD 107D COND. A



AMERICAN MICROWAVE CORPORATION

7311G GROVE RD., FREDERICK, MD. 21701
TEL: (301) 662-4700 FAX: (301) 662-4938

APPROVALS	DATE
DRAWN <i>WSP</i>	12/2/93
CHECKED	

PRODUCT FEATURE

SW-218-2A

0.3-18 GHz, REFLECTIVE, HIGH POWER, SPDT SWITCH MODULE

SIZE A SHEET 1 OF 2 DWG. # 100-S015-000